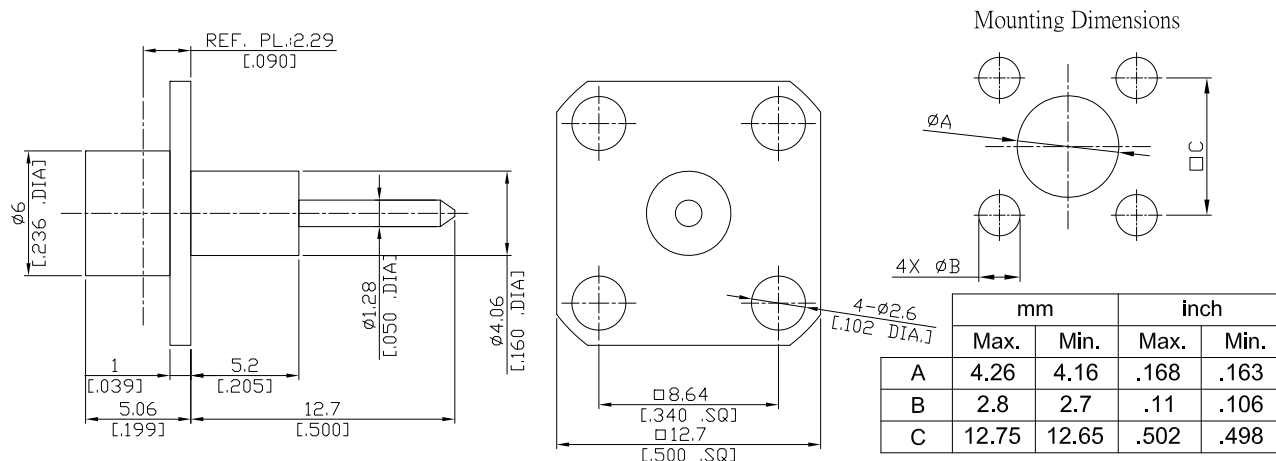


SMP Plug (Male) Smooth Bore Connector Solder Attachment 4 Hole Flange Mount  
Stub Terminal, 8.64mm (.340 inch) Hole Spacing DC-12GHz VSWR1.2

**SMP1GFA50SB-1776A / 9X**



All dimensions are in mm [inch]

Tolerances according to DIN ISO 2768-mH

**Interface**

According to

MIL-STD-348A/326

**Electrical Data**

Impedance

50 Ω

Frequency

DC to 12 GHz

VSWR (Return Loss)

≤ 1.2 (≥ 20.8 dB)

Insertion Loss

≤ 0.1 x √F (GHz) dB

Insulation Resistance

≥ 5 GΩ

Center Contact Resistance

≤ 6.0 mΩ

Outer Contact Resistance

≤ 2.0 mΩ

Test Voltage

500 V rms

Working Voltage (at sea level)

335 V rms

Contact Current

1.2 A DC max

**Material And Plating**

Piece Parts	Material	Plating
Centre contact	Beryllium Copper	Gold plating, 3 μinch (Non-magnetic nickel-phosphorus underplating, 80 μinch)
Body	Stainless Steel	Passivated
Insulator	PTFE	

SMP Plug (Male) Smooth Bore Connector Solder Attachment 4 Hole Flange Mount  
Stub Terminal, 8.64mm (.340 inch) Hole Spacing DC-12GHz VSWR1.2

## SMP1GFA50SB-1776A / 9X

### Mechanical Data

Coupling mechanisms	Snap-lock	
Mating Cycles	≥ 1000	
Center Contact Captivation	≥ 7 N	
Engagement force	9 N max	smooth bore
Disengagement force	2.2 N min	smooth bore

### Environmental Data

Temperature Range	-65°C to +165°C
Thermal shock	MIL-STD-202, Meth. 107, Cond. B
Corrosion	MIL-STD-202, Meth. 101, Cond. B
Vibration	MIL-STD-202, Meth. 204, Cond.D
Shock	MIL-STD-202, Meth. 213, Cond. I
Moisture Resistance	MIL-STD-202, Meth. 106
RoHS	compliant

### Packing

Single or 100